

GODERICH WALDORF SCHOOL NEWSLETTER
September-October 2017

Rokel Community, Limba Coner, Rokel, Freetown-SIERRA LEONE

Website: [www/http/ goderichwaldorfschool.org](http://goderichwaldorfschool.org)

Email: waldorfsl@yahoo.com/memmammah@gmail.com

School reopened on September 11, 2017 and 245 children returned from the long vacation which started in July. Certainly students always look forward to returning to school and re-join their friends and teachers.



Above: Goderich Waldorf School students pose for photo on first day of school reopening

ACHIEVEMENT:

National Primary School Examinations Results

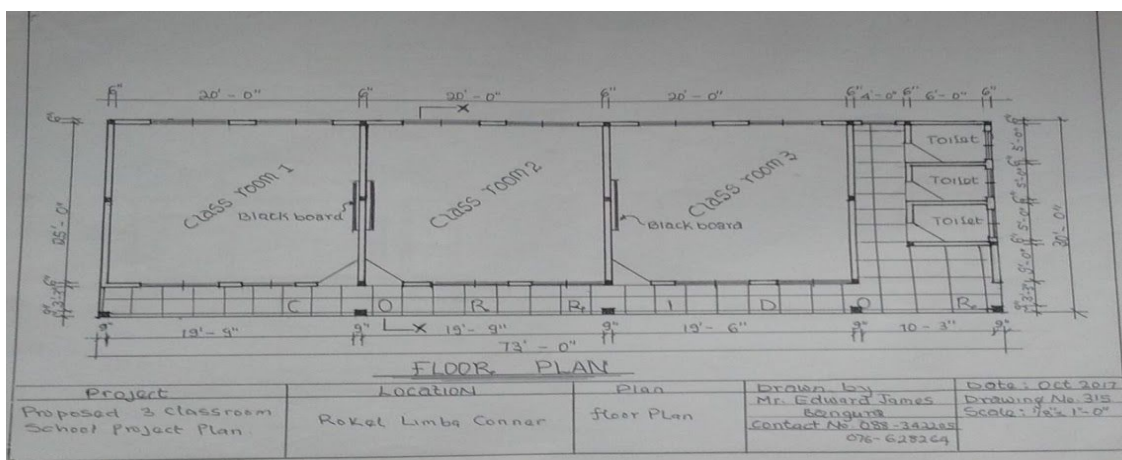
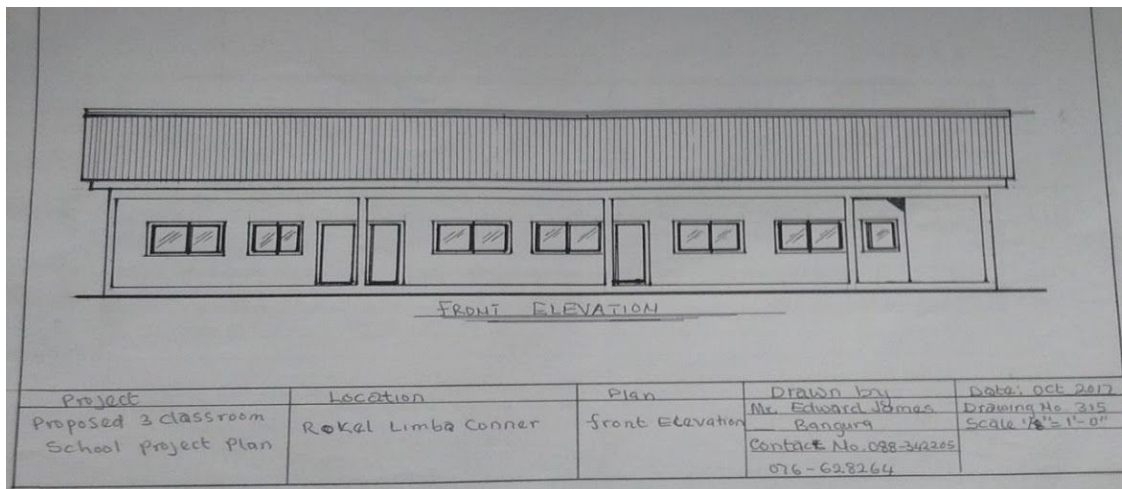
One of the most important achievement last school year was the students' performance in the national examinations. 91 %(41) of students in class 6 passed the National Primary School Examinations. In September, these children were transferred to other schools where they can continue in class 7. Curently our school stopped in class 6 due to our steady pace to get teachers trained and certificated by state approved teacher training colleges.

PROPOSED PROJECT:

Classrooms and related facilities

Needs: Infrastructure is the most pressing need as the school population is growing. The current six classrooms structure we have is not enough to host the school population (students and staff) . Also the need for water supply to the school facility is evident because the only source of water is from a hand-pump well dug seven years ago. Currently, the water table is low due to climate change causing water scarcity. The school does not have the luxury of flush toilets. Students and staff used make-shift latrines.

Project: We have agreed to embark on the construction of three classrooms and a staff room with modern toilets. This school year (2017/18), we will use donations to construct a three-classroom structure, including staff room and toilets.



PARTNERS:

❖ **Freunde Der Erziehungskunst(Friends of Waldorf Education),Germany**

We are so grateful to the Freunde Der Erziehungskunst, Germany and all Waldorf schools and teachers that continued to provide financial support through their WOW-Day activities and from other sources. Freunde Der Erziehungskunst continues to be our mainstay, providing our school running cost on a monthly basis since 2000. Donation received is used for staff salaries, procurement of teaching and learning materials, and medical assistance to very poor students, pay utility bills and assist teachers enrolled in-service state teacher training institutions.

❖ **Dhana Trust, UK:**

The DhanaTrust UK, has from time to time received donations from individuals and schools on behalf of the Goderich Waldorf School. We are always grateful for representing our school in the UK.

❖ **Waldorf High School at Massachusetts Bay, USA:**

The Goderich Waldorf School and the Waldorf High School at Massachusetts Bay, USA, have been in partnership for the past 12 years and our school continued to benefit from donations her students since 2005. Families in the school communities continued to appreciate and remember your assistance especially during the Ebola epidemic in 2014/15.

Building Education, Enterprise and Agriculture Sustainably (BEADS):

We are discussing partnership relationship with BEADS, USA. This partnership engagement is important because it resonates our focus on developing the needed infrastructures and human capacities through anthroposophical approaches that will expand Waldorf education in Sierra Leone.

AaMli 'tn| 'Mj|n| x_xZl XyMlX'uM{I Zxy', an 'vhl {b | Z '{n'y| uunx{n| xZ_nx{y'MlX'yWannj' uxnZV{ b '@ZxxMlZnl Z'

'NW|j{t'MlX'y| uunx{y{M_''

Robert Bendu

Ishmael Sesay

Peter Yagbaji

Aminata Bendu

Mustapha Kamara

Sheka Koroma

Osman Kargbo''

Z MfXynl '(xM'

2 Ml |y'2 M k M'

.
. .
. .
. .

<1 AB?" @



UnfZQ 1° @Ü'<B<*1@ 3ž 'A" °†) "?§2 ?@° 2 *3° A° Ł" 3ž B ÝÜµÜäµÜä



† 1° @Ü'<B<*1@ A'H 5?0° 3ž 'A" °†) "?§2 ?@° 2 *3° A° Ł" 3ž B ÝÜµÜäµÜä



† 1° @Ü'<B<*1@ 3ž 'A" °†) "?§2 ?°?5Ł" ?AŁ" 3ž B 53 ÝÜ^A @ <A" 2 Ł" ? ÝÜÜä



† 1° @@Ÿ' <B <*1@1" ° ?3*3(° 3ž 'A" ° †) " ?§2 ?^a?5Ł" ?A'Ł" 3ž B '53 ŸŪ^A) ' @ <A" 2 Ł" ? ŸŪŪâ ·



† 1° @@P' < B < * 1 @ ° 3 ž ' A " ° †) " ? § 2 ? ° * @) 2 ° " 1 ' @ @ J ' 5 3 ' Ÿ Ū (A) ' @ < A " 2 Ł " ? ' Ÿ Ū Ū ä ' .



† 1° @@B' < B < * 1 @ 3 ž ' A " ° †) " ? § 2 ? ' a ' < " < ? ' J ° (£ ° / * 5 3 Ý Ū ^) ' @ < A " 2 £ " ? Ý Ū Ū à ' .

† 1° @@B' < B < * 1 @ 1 " ° ? 3 * 3 (° 3 ž ' A " ° †) " ? § 2 ? ' a ' < " A " ? ' J ° (£ ° / * 5 3 Ý Ū ^) ' @ < A " 2 £ " ? Ý Ū Ū à ' .



† 1° @@à ' < B < * 1 @ 3 ž ' A " ° †) " ? § 2 ? ' a ' 2 B @ ^ <) ° ' O ' 2 ° ? ° ' 5 3 Ý Ū ^) ' @ < A " 2 £ " ? Ý Ū Ū à ' .



† 1° @@à <B <*1@° 3ž 'A" ° †) "?§2 ?°2 B@A° <) ° '0° 2 ° ?° '53 ÝÛ^)'@ <A" 2 Ł" ? ÝÛÛà'



† 1° @@ à' <B <*1@ ° A'H 5?0° 3ž 'A" ° †) " ?§2 ?° 2 B@A° <) ° '0° 2 ° ?° '53 'YÜA) ' @ <A" 2 Ł" ?' YÜÜä'



† 1° @@ á' <B <*1@ ° 3ž 'A" ° †) " ?§2 ?° @ " 0° '05?52 ° '53 'YÜA) ' @ <A" 2 Ł" ?' YÜÜä'



† 1° @@á' <B < *1@° A'H 5?0° 3ž 'A" ° †) " ?\$2 ?°@ " 0° '05?52 ° ' ' .

ŁZjn, © (5ž " ? *) ' H ° 1ž 5? ' vJMy{ZMwZxy©



11x© yak Nj | @yM\$?nUZx(ŁZI X| \$<Z{ZxJMUM\$2 |y(MiaMONk Mv\$@Zi MOnxk M\$MX" k b MvŁZI X| a'

